

ROOF MAKER

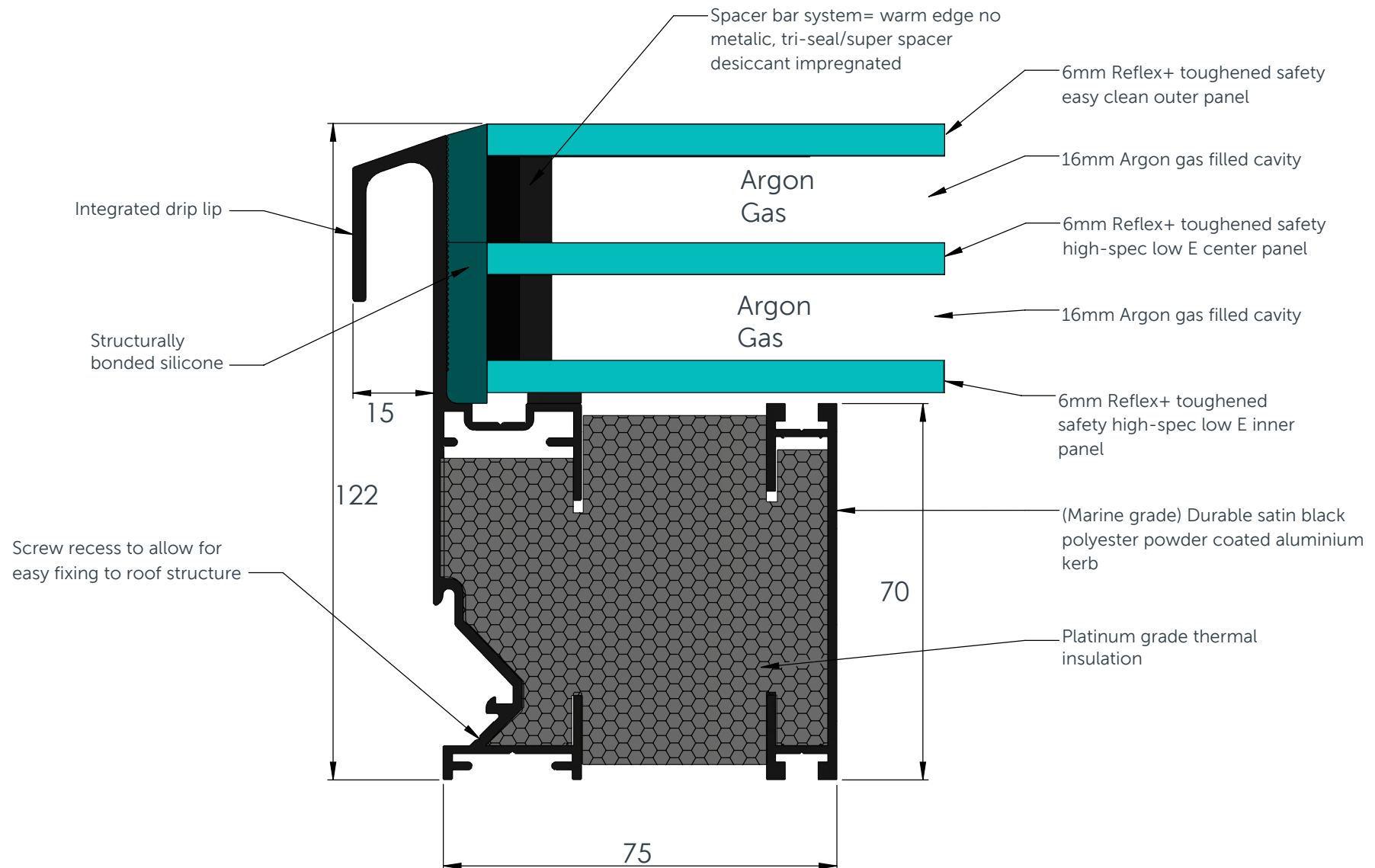
WORLD CLASS ROOFLIGHTS



PRODUCT SPECIFICATION AND INSTALLATION GUIDE

TRIPLE GLAZED FIXED FLAT ROOFLIGHT

TRIPLE GLAZED FIXED FLAT ROOFLIGHT: STANDARD PRODUCT SPECIFICATION



TRIPLE GLAZED FIXED FLAT ROOFLIGHT: INSTALLATION GUIDE

ON DELIVERY OF YOUR NEW FIXED FLAT ROOFLIGHT, YOU WILL RECIEVE;

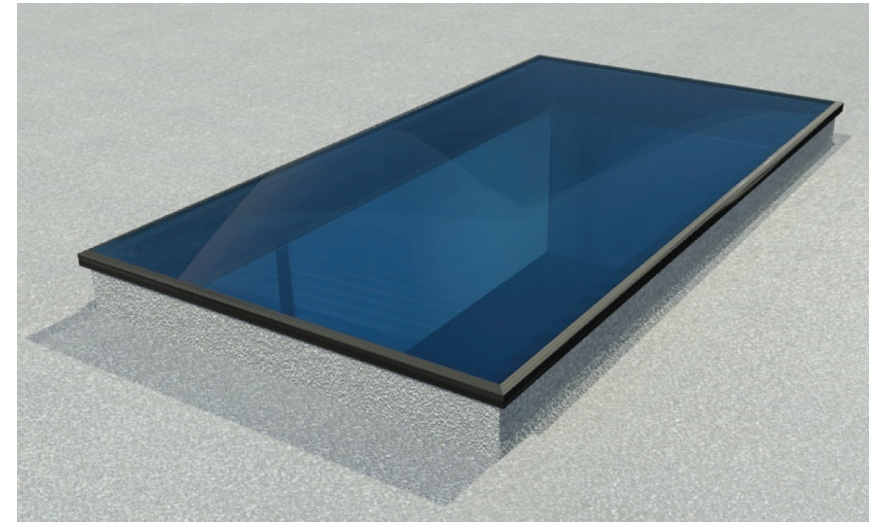
- Your Fixed Flat Rooflight

IN ADDITION TO YOUR NEW FIXED FLAT ROOFLIGHT, YOU WILL NEED;

- Silicone Adhesive Sealant
(high quality; Dow Corning 791 recommended)
- Drill, bits and screws as required
- Materials to prepare a timber kerb

Please take precaution when moving heavy objects and working at height. Be sure to use the correct equipment. Guide weights based on size, are shown on the chart to the right.

GUIDE WEIGHTS (Triple Glazed)	
Size (mm)	Weight (kg)
1000x1000	80
1000x1500	110
1000x2000	140
1000x2500	170
1200x1500	125
1200x2000	160
1400x1500	145
1400x2000	185
1200x2500	200
700x3000	155
1000x3000	205



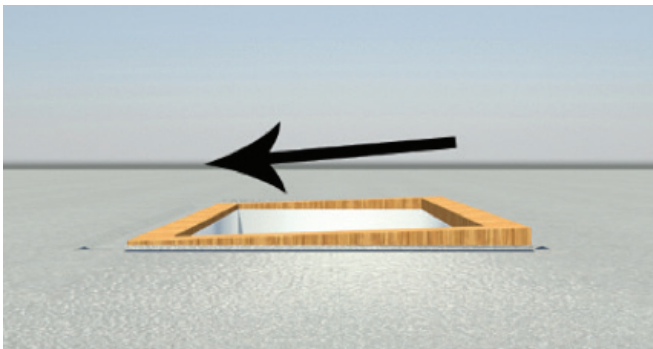
INSTALLATION GUIDE

Make sure to read through all steps and understand all requirements before beginning the installation.

STEP ONE

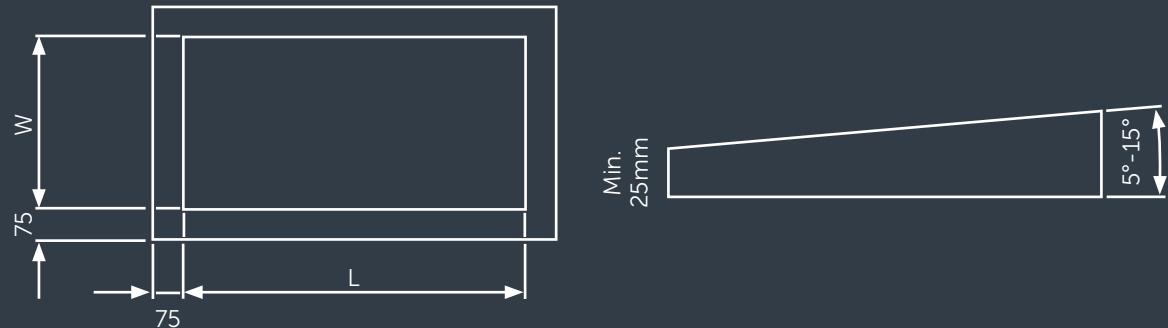
PREPARE A TIMBER KERB FOR YOUR ROOFLIGHT

Prepare a 75mm width timber kerb for your rooflight. This should be a minimum of 25mm in height from the finished roof level. The internal dimensions of your kerb should match the internal dimensions of the rooflight/size ordered.



Your Fixed Flat Rooflight needs to be pitched at a minimum of 5° to allow water run-off. If your roof does not have this pitch, build the angle into your timber kerb. We recommend that you run the fall across the 'width' or 'shorter side' of the rooflight when building an angled kerb, as the fall will be less noticeable, which will improve the aesthetics when fitted.

Timber Kerb Dimensions (mm)



Dimensions L and W are the length and width of your Fixed Flat Rooflight respectively. The internal dimensions are equal to the size ordered.

ROOF MAKER

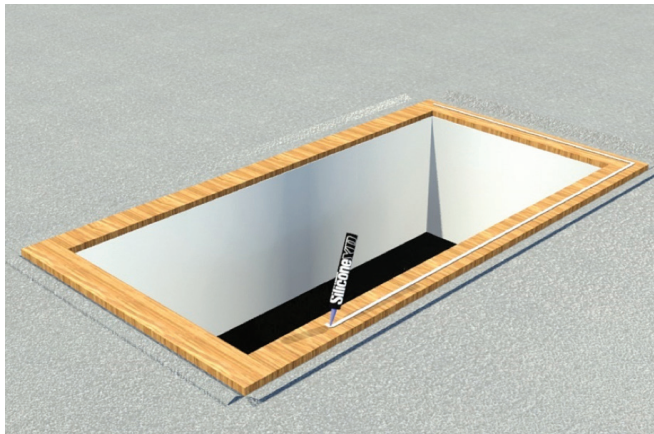
WORLD CLASS ROOFLIGHTS

Call us: 0116 269 6297
Mon-Fri 9-5pm

STEP TWO

APPLY SILICONE TO YOUR KERB

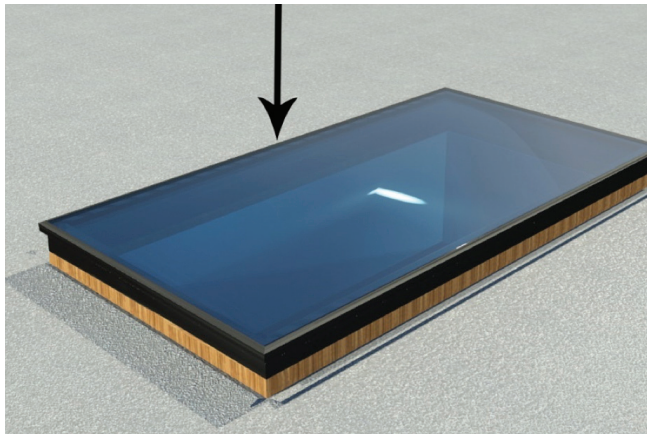
Apply a generous bead of silicone around the top face of the kerb, as shown. The bead of silicone should be applied approximately 20mm from the internal edge.



STEP THREE

POSITION THE ROOFLIGHT

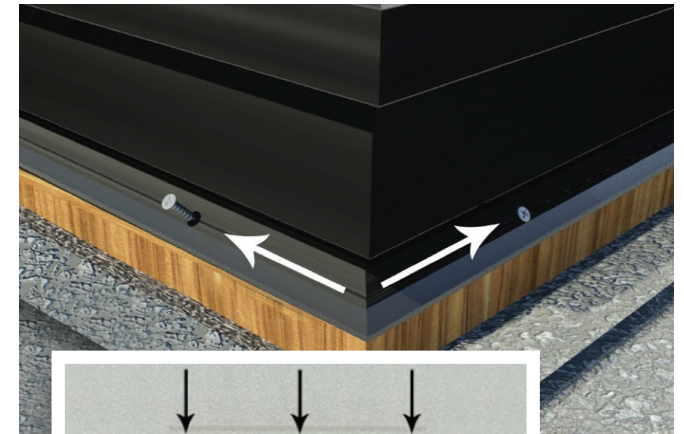
Bring your Fixed Flat Rooflight into position. Align the rooflight so that it is centered on the aperture.



STEP FOUR

SECURE THE ROOFLIGHT TO THE KERB

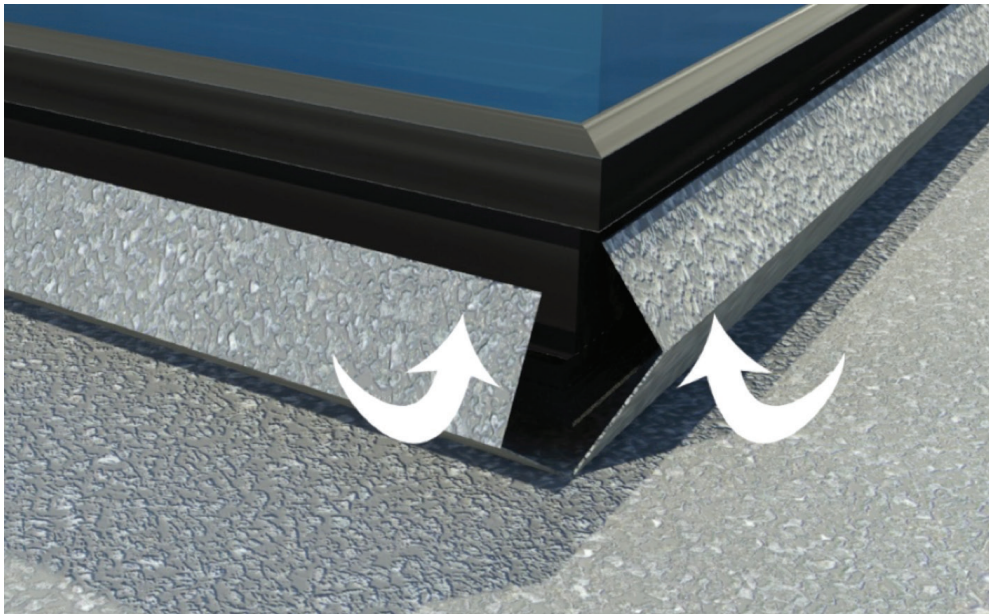
Use the recess in the rooflight upstand to position the screws. Drill a pilot hole appropriate for your chosen screw diameter, and fix the frame with screws in the indicated positions: 100mm from each corner, and in the centre of the long sides.



STEP FIVE

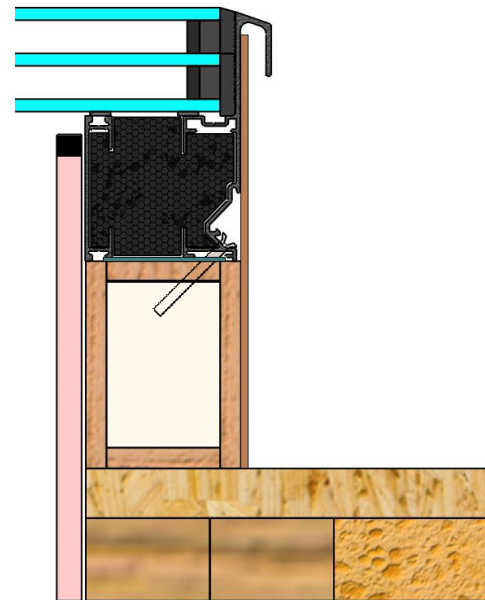
A: SEAL THE ROOFLIGHT WITH THE ROOF MEMBRANE

Seal your flashing/roof membrane up the side of the rooflight, tucking it up underneath the dedicated drip overhang. When using a torch to seal roof membrane, cut material to the suitable size, fold back and apply heat to the sheet, away from the rooflight to avoid damage. Pre-heated membrane can then be bonded to the side of the rooflight.



B: WHEN USING GRP ROOF FINISH

When using GRP to finish roof, silicone bond a 4mm plywood border around the upstand and kerb, this will provide a more suitable surface for the GRP layer to adhere to.



For plastering finish guidelines, please follow the roof section fitting guide, included at the end of this document.

Congratulations! Your Fixed Flat Rooflight is now installed.

ROOF SECTION FITTING GUIDE - TRIPLE GLAZED

